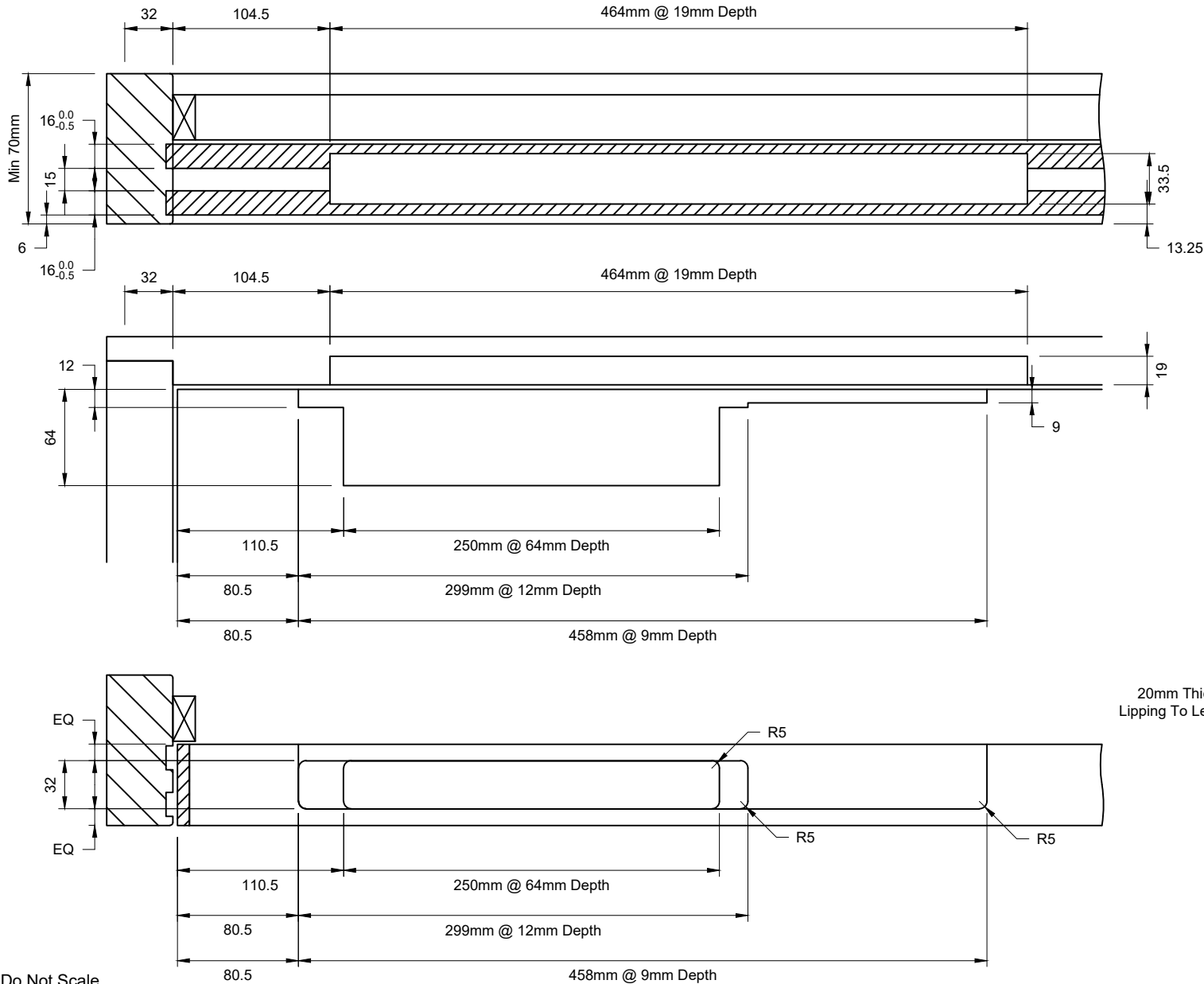


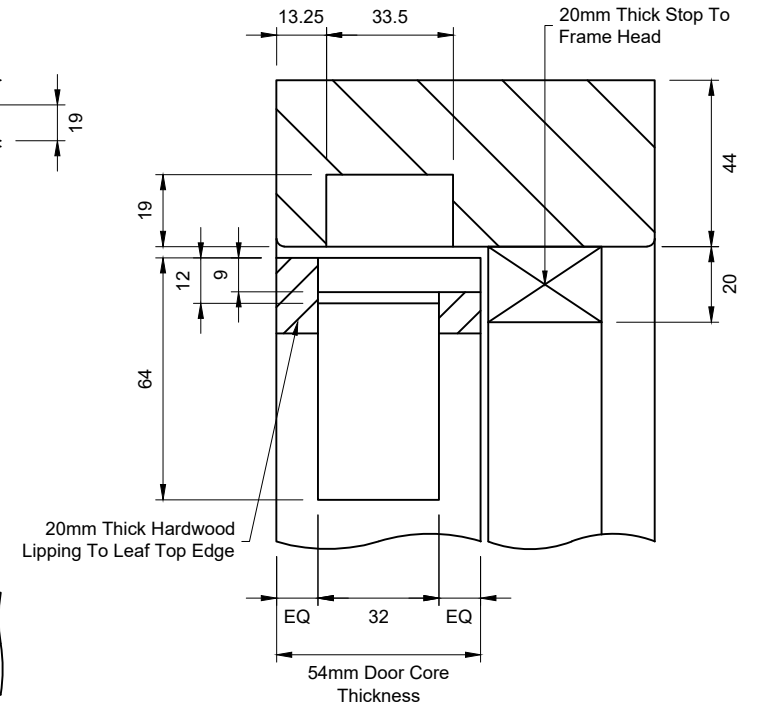
All Dimensions Are In mm Unless Stated



Notes:

- Minimum 54mm Door Thickness
- 20mm Thick Hardwood Lipping To Leaf Top Edge (Min 640kg/m³)
- 20mm Thick Stop To Frame Head (Planted On Or Rebated)
- Hardwood Frame (Min 640kg/m³), Min 44mm (T) x 70mm (W) Frame Section
- All Rebates For Closer To Be Fitted With Manufactures IP.114 Intumescent As Per Manufactures Instructions. See CF5902
- Fit 15 x 4mm Intumescent Seal To Leaf Top Edge Prior To Machining
- Perimeter Intumescent Fire Seals To By-Pass The Slide Channel By A Minimum Of 3mm On Both Sides

- Dimensions Include Allowances For Intumescent Kit



Do Not Scale.

If In Doubt Ask!

Description: **Concealed Closer Machining - FD60 - 54mm Core - Rutland ITS.11204 2-4**

Drawn By: **O BOOY**

Approved: **Approved**

Date: **22/05/2026**

Cert / FoA Ref:

Drawing No:

© Doorpac Ltd

Size: **As Above**

Rev:

Fire Rating:

DP23187



Job No:

Tolerance: **±0.25mm**

FD60

Rev01